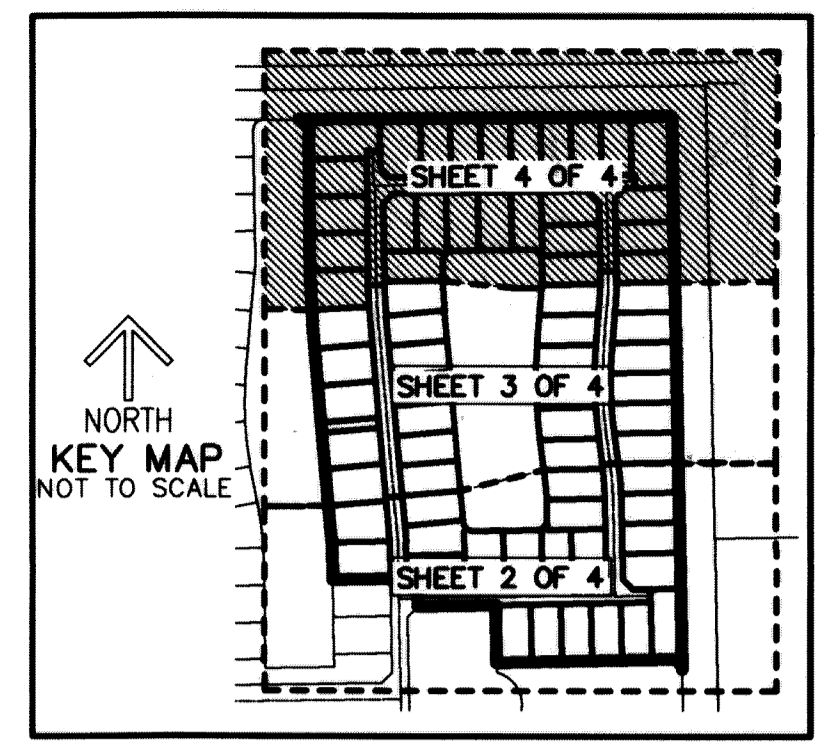


THIS INSTRUMENT PREPARED BY
 DAVID P. LINDLEY
 OF
CAULFIELD and WHEELER, INC.
 SURVEYORS - ENGINEERS - PLANNERS
 7900 GLADES ROAD, SUITE 100
 BOCA RATON, FLORIDA 33434 - (561)392-1991

ROYAL PALM POLO PLAT FOUR

A PLANNED UNIT DEVELOPMENT
 BEING A REPLAT OF A PORTION OF ROYAL PALM POLO PLAT TWO, ALL OF LOTS 64 THROUGH 123, TOGETHER WITH ALL OF TRACT R2 AND TRACT W4, AS RECORDED IN PLAT BOOK 122, PAGES 105 THROUGH 111. TOGETHER WITH LOTS 94 THROUGH 98 OF BLOCK 2 AND A PORTION OF TRACT R, ROYAL PALM POLO, AS RECORDED IN PLAT BOOK 117, PAGES 194 THROUGH 200 OF THE PUBLIC RECORDS OF PALM BEACH COUNTY, FLORIDA.
 LYING IN THE SOUTHEAST ONE-QUARTER OF SECTION 34, TOWNSHIP 46 SOUTH, RANGE 42 EAST,
 CITY OF BOCA RATON, PALM BEACH COUNTY, FLORIDA.



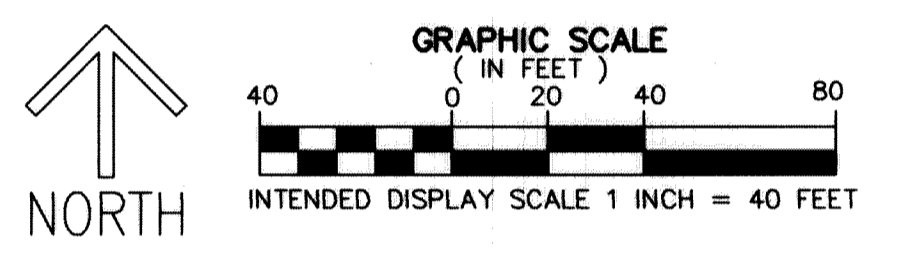
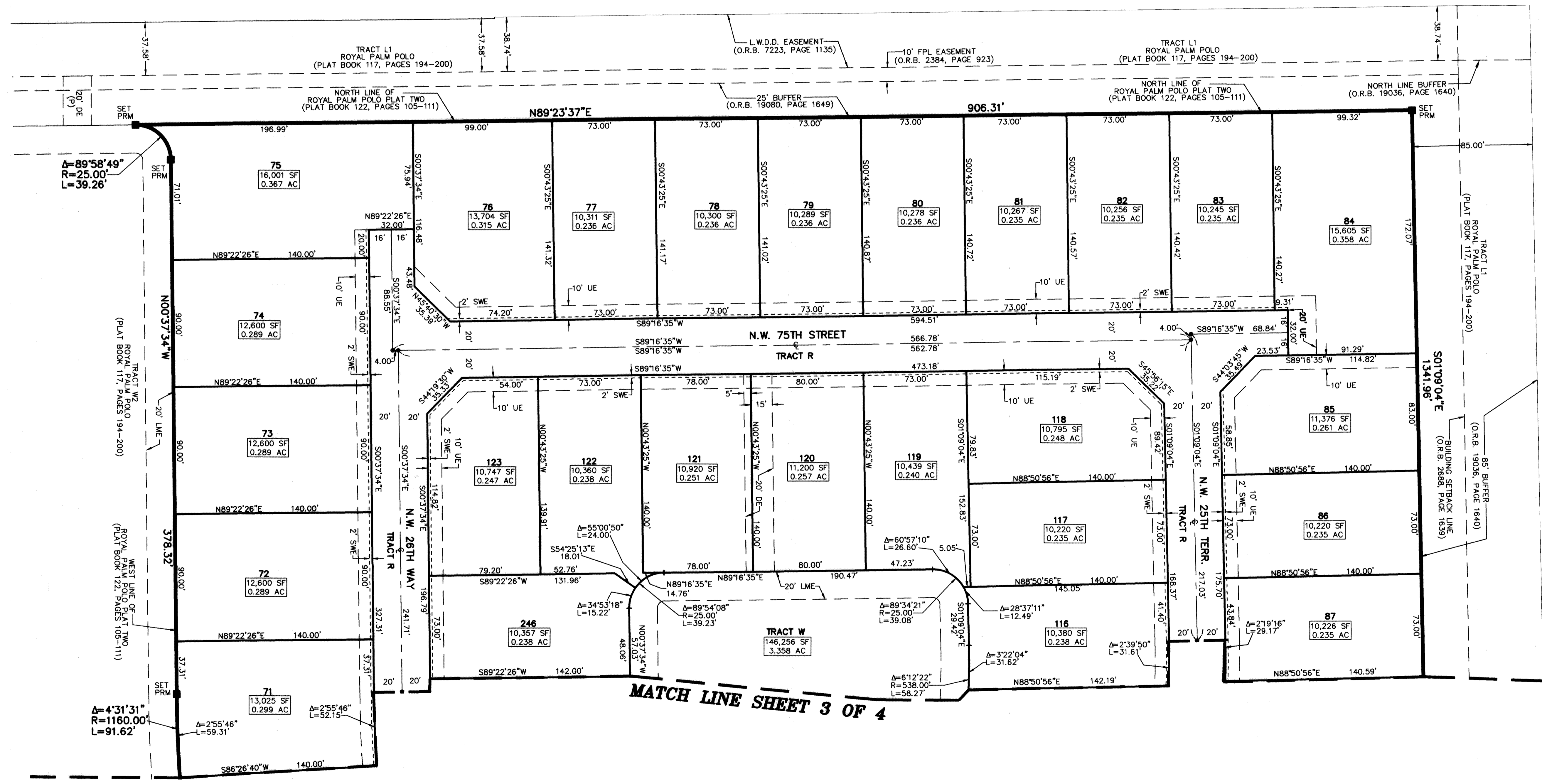
149

STATE OF FLORIDA
 COUNTY OF PALM BEACH
 THIS PLAT WAS FILED FOR
 RECORD AT _____ M.
 THIS _____ DAY OF _____
 A.D. 20____ AND DULY RECORDED
 IN PLAT BOOK _____ ON
 PAGES _____ AND _____

SHARON R. BOCK
 CLERK AND COMPTROLLER

BY: _____
 DEPUTY CLERK

SHEET 4 OF 4



LEGEND/ABBREVIATIONS

- PRM - INDICATES SET PERMANENT REFERENCE MONUMENT
- 4"x4"x24" CONCRETE MONUMENT WITH DISK STAMPED "PRM LB#3591", UNLESS OTHERWISE NOTED
- - INDICATES PERMANENT CONTROL POINT
- CL - CENTERLINE
- ∠ - CENTRAL ANGLE
- R - RADIUS
- L - ARC LENGTH
- AC - ACRES
- CB - CHORD BEARING
- CD - CHORD DISTANCE
- DE - DRAINAGE EASEMENT
- PBCEU - PALM BEACH COUNTY UTILITY EASEMENT
- FPL - FLORIDA POWER & LIGHT CO.
- LMAE - LAKE MAINTENANCE ACCESS EASEMENT
- LME - LAKE MAINTENANCE EASEMENT
- L.W.D.D. - LAKE WORTH DRAINAGE DISTRICT
- N.T.S. - NOT TO SCALE
- O.R.B. - OFFICIAL RECORD BOOK
- (R) - RADIAL LINE
- SF - SQUARE FEET
- SWE - SIDEWALK EASEMENT
- UE - UTILITY EASEMENT
- (P) - DENOTES ROYAL PALM POLO AS RECORDED IN PLAT BOOK 117, PAGES 194-200 PALM BEACH COUNTY RECORDS

MATCH LINE SHEET 3 OF 4